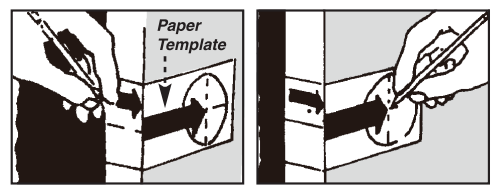


## INSTALLATION INSTRUCTIONS FOR TUBULAR LOCKSETS

### 1. MARK DOOR

For new installation, measure approximately 38" from the bottom of the door. Using the enclosed template, mark the hole centers, (**see figure A**). For exterior doors (locking with key), the backset is normally 2-3/4". For interior doors, the backset is normally 2-3/8".

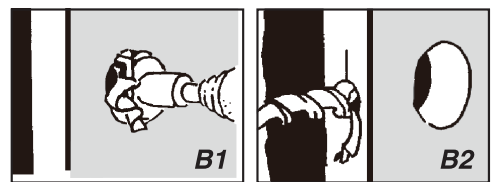
Figure A



### 2. DRILL HOLES

Drill a 2-1/8" hole through the face of the door. To avoid splitting the wood, drill approximately 2/3 of the way through one side, then finish drilling the hole through the other side, (**see figure B1**). Drill a 1" hole from the face of the door for the latch, (**see figure B2**).

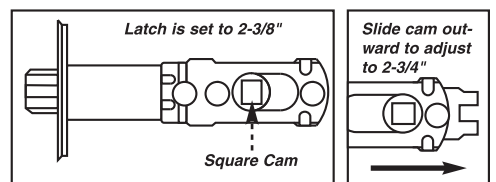
Figure B



### 3. INSTALL LATCH

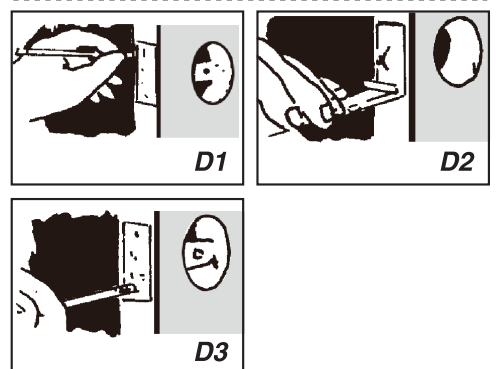
The latch is factory set for 2-3/8" backset. To change to 2-3/4", simply slide the square cam outward, (**see figure C**).

Figure C



Insert the latch into the door using the preferred faceplate. Mark the outline of the latch and for the two screws, (**see figure D1**). Remove the latch and chisel approximately 1/8" deep so the latch sits flush with the door, (**see figure D2**). Using an awl or ice pick, mark two starter holes for the screws. Reinstall the latch and secure with the two screws provided. Do not over tighten, (**see figure D3**).

Figure D

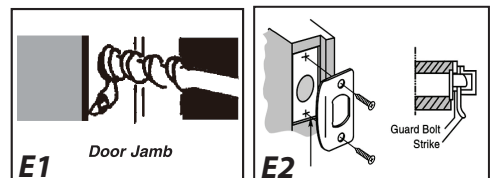


**NOTE: Chiseling the door frame and 2 screws does not pertain to the drive in latch.**

### 4. INSTALL STRIKE-PLATE

Mark the door jamb exactly opposite center of bolt. Using an awl or ice pick, mark two starter holes for the screws. Drill a 1" hole a minimum of 5/8" deep, (**see figure E1**). Chisel door jamb approximately 1/16" deep or until the Strike Plate is flush with frame. Attach with the two screws provided. The tang (metal tab) can be adjusted to tighten the door against the frame, (**see figure E2**).

Figure E

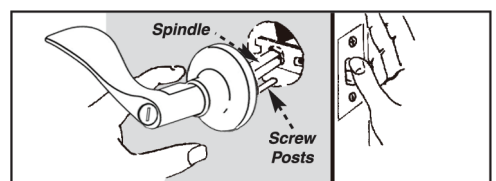


### 5. INSTALL LOCKSET

Insert the outside knob through the door making sure the two screw posts and square spindle go through the holes in the latch. On a keyed lock, be sure the keyway is facing downward, (**see figure F**).

While holding the outside knob in place, insert the inside knob through the door making sure the two screw holes and spindle hole are properly aligned with the screw posts and spindle on the outside knob. Install the two screws provided and tighten snugly, (**see figure G**).

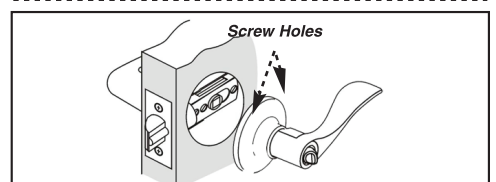
Figure F



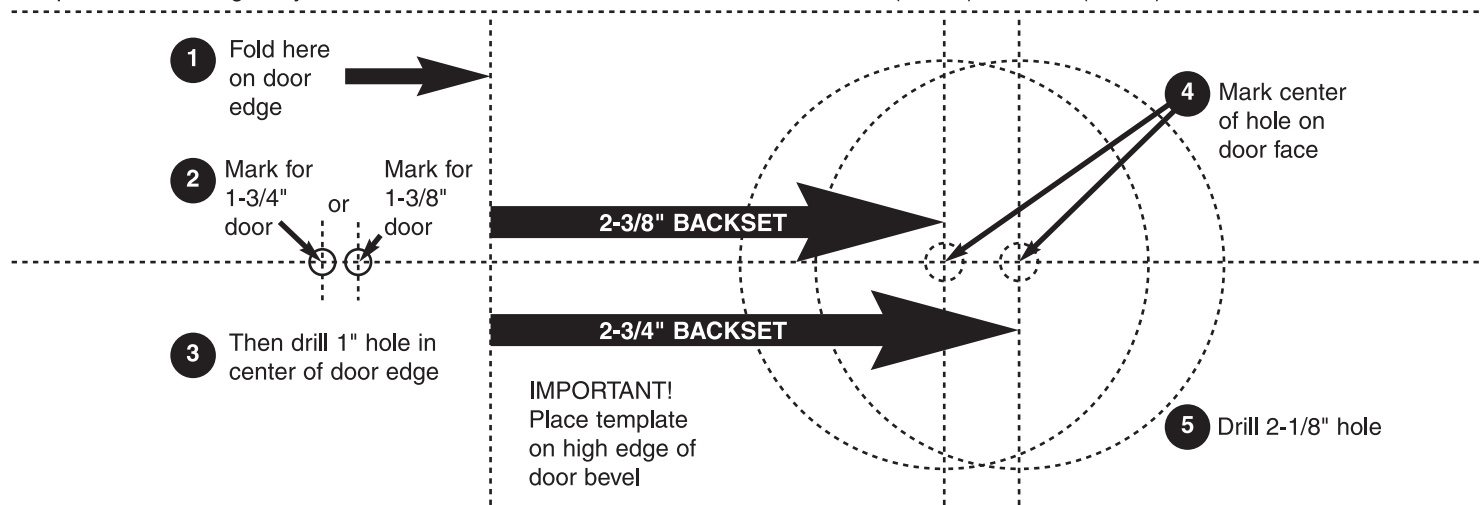
If key hole is placed in erroneous position, depress retainer and slide knob off. Turn outside knob 180° and replace knob back.

For checking a proper installation, just turn both outside and inside levers.


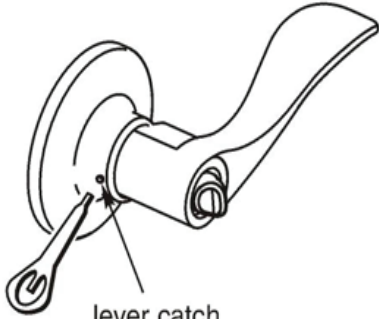
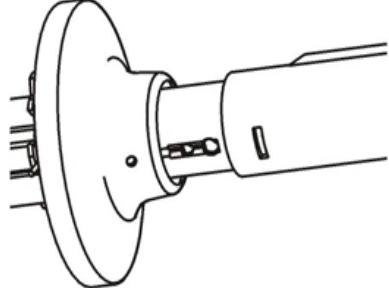
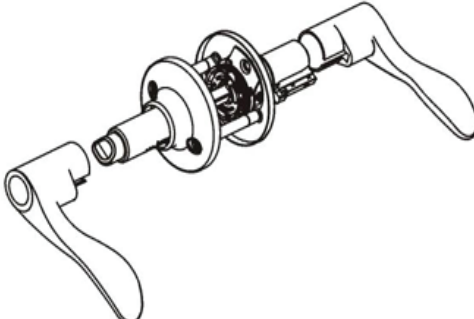

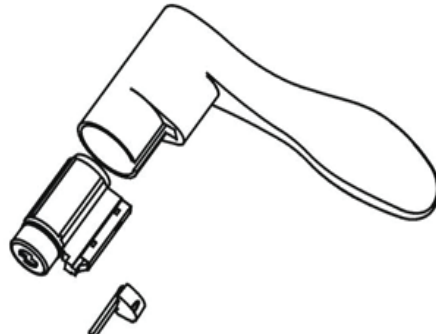
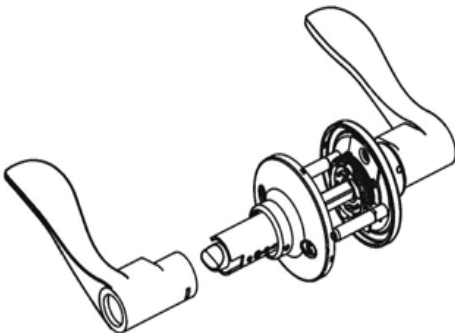
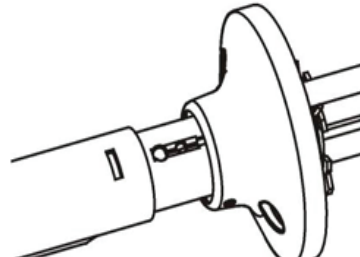
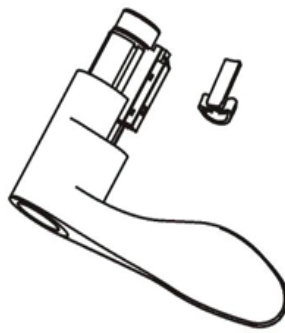
Figure G



Template for installing entry lock and deadbolts. Suitable for door thickness: 1-3/8" (35mm) to 1-3/4" (45mm)



**REVERSIBLE LEVER**

 <p><b>Step One</b></p> <p>Please check that the levers are unlocked (this is for keyed sets only)</p>	 <p><b>Step Two</b></p> <p>Insert hand tool into the lever catch. Depress the hand tool into the lever catch.</p>	 <p><b>Step Three</b></p> <p>Remove the lever from the Lock body</p>
 <p><b>Step Four</b></p> <p>Repeat on other lever</p>	 <p><b>Step Five</b></p> <p>On each lever there are white plastic pieces. Remove these white plastic pieces from each lever. Set aside. (These white plastic pieces will be reinserted in step 8 &amp; 9)</p>	 <p><b>Step Six</b></p> <p>Remove the cylinder from the outside lever.</p>
 <p><b>Step Seven:</b></p> <p>Reverse the levers from the outside to the inside.</p>	 <p><b>Step Eight</b></p> <p>Rotate the lock body 180 degrees. NOTE: The hole on the lock body must line up with the hole on the lever. Reinsert the appropriate white plastic piece. Push the lever onto the lock body until the catch clicks into place.</p>	 <p><b>Step Nine</b></p> <p>Insert the key cylinder into the outside lever. NOTE: Be sure that the cylinder has been pushed all the way though Reinsert the appropriate white plastic piece. Push the lever onto the lock body until the catch clicks into place.</p>