

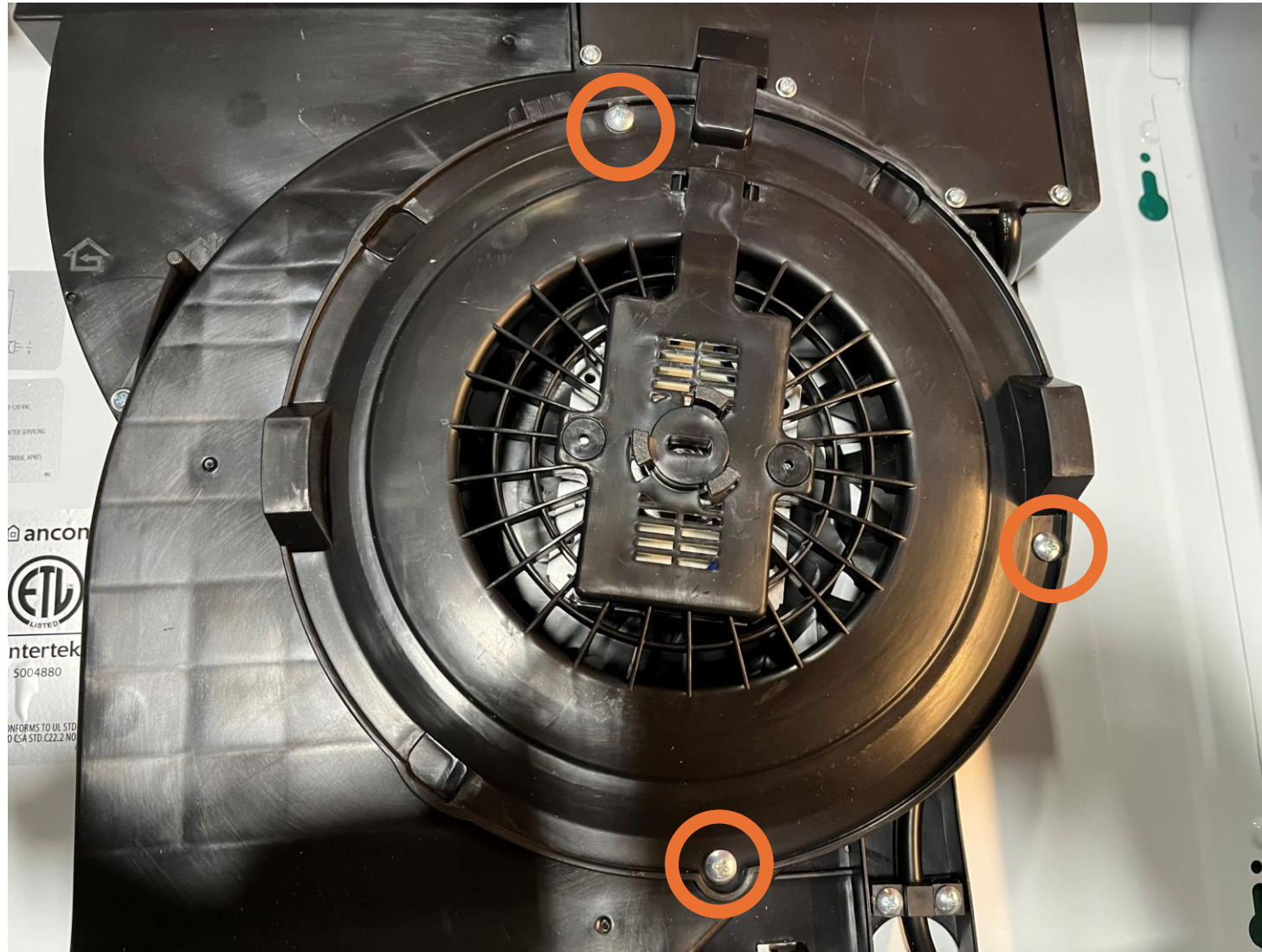
Remove both filters



Remove the front light panel, there are 2 screws at the corner



To remove the motor, unscrew the 3 screws on the cover of motor



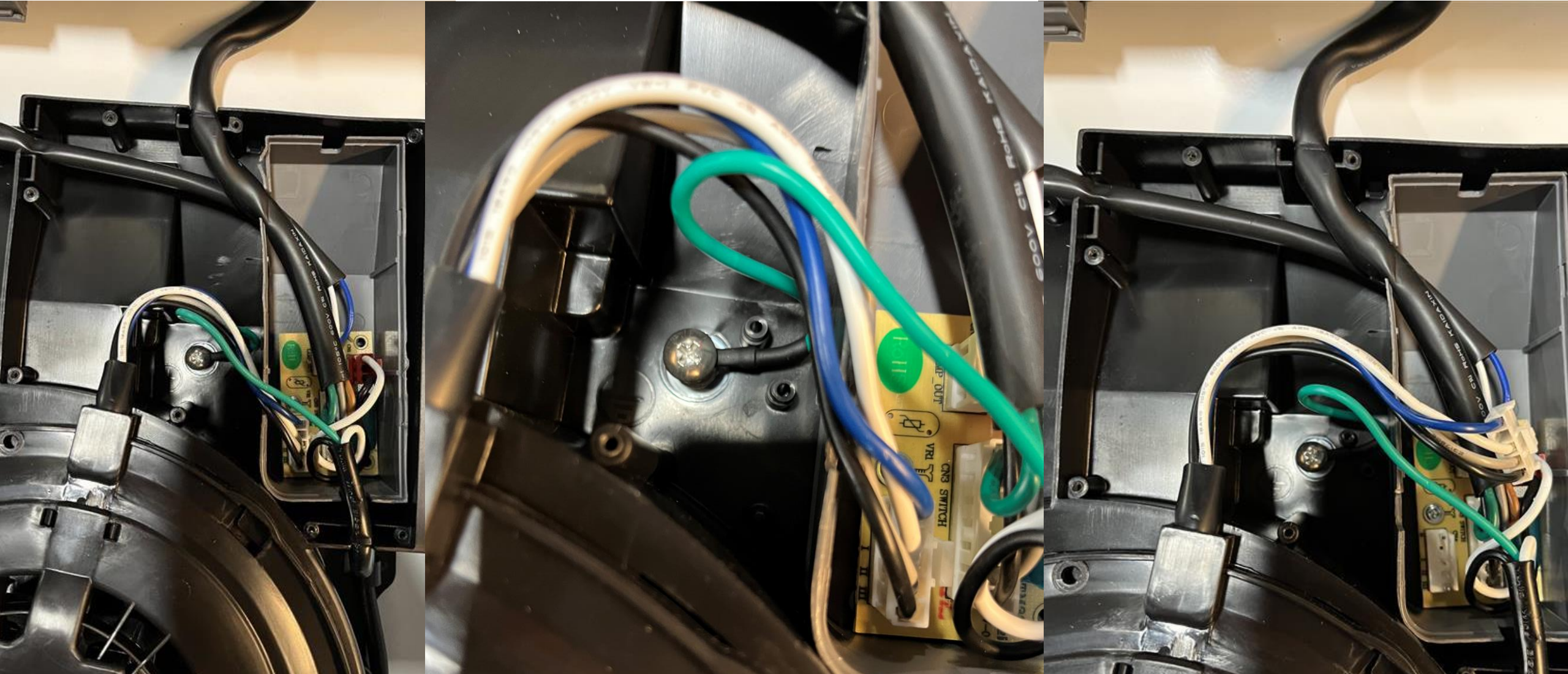
Unscrew 8 screws
to remove the main
board cover



After opening the board cover, there is small gray PCB box, just take it out of the cover (there is no screw)



The connection for the motor is visible, just unplug it



After just take out the motor, and then replace it

