



Rivella

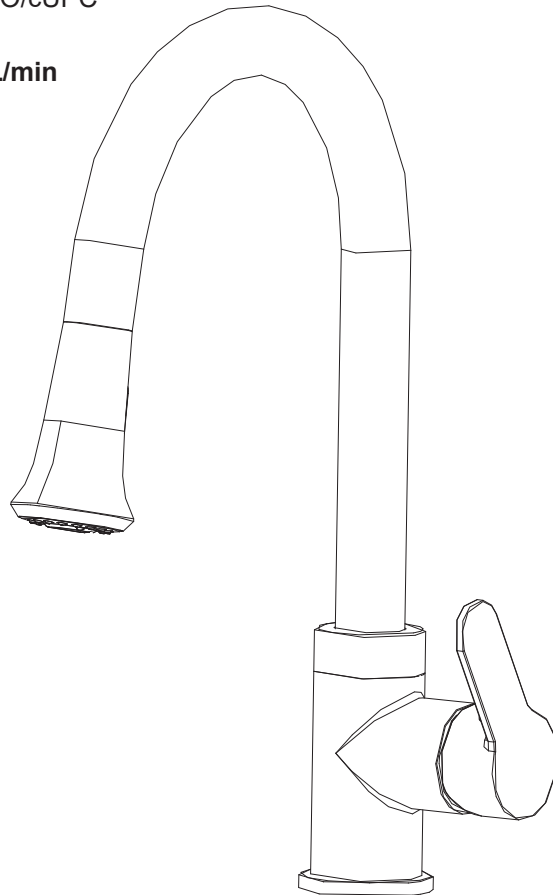


Single Handle Pull-out Kitchen Faucet

STANDARDS

- ASME A112.18.1/CSA B125.1
- ASME A112.18.2/CSA B125.2
- LISTED IAPMO/cUPC

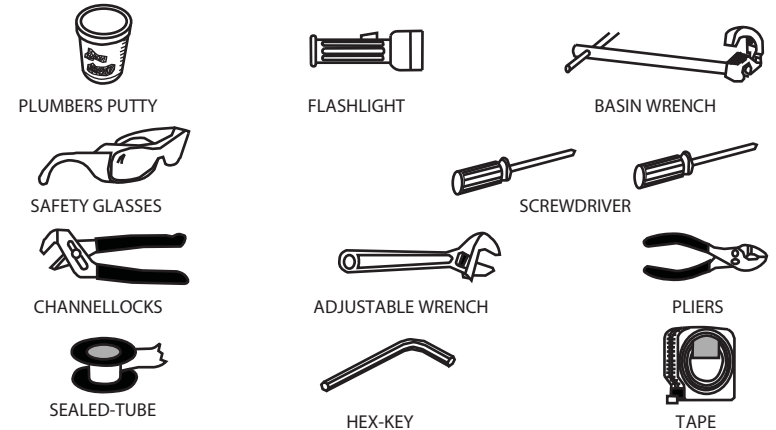
- **1.8 gpm/6.8 L/min**



Helpful Information

Tools:

Gather the necessary tools as shown below to complete the installation of this faucet. Some may not be needed depending on the model of faucet you are installing. Check with your local hardware store on the requirements of your installation situation.



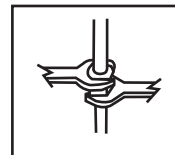
! WARNING:
Please keep the tools for future use!

Attention:

For easy installation, you will need:

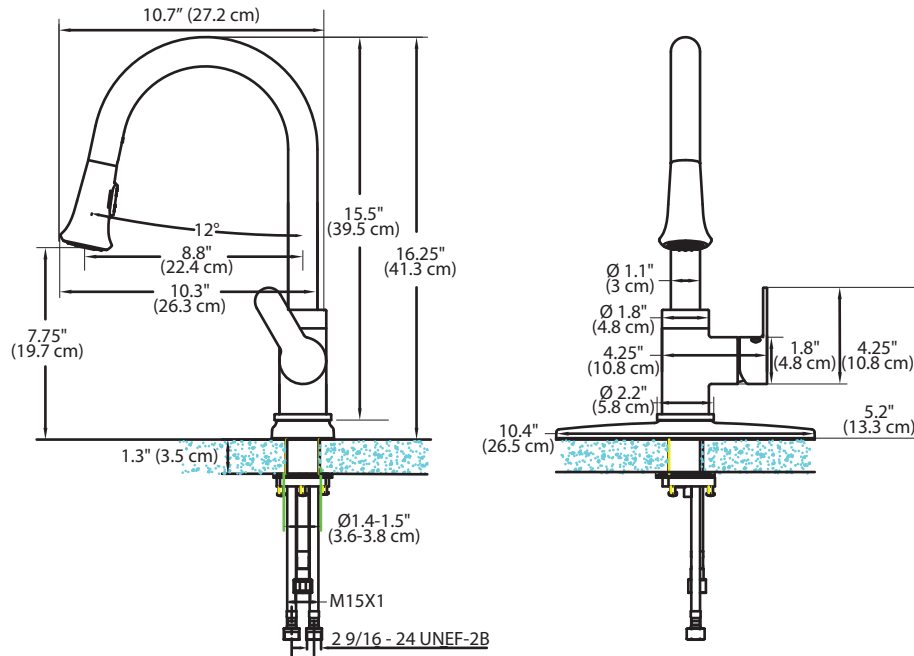
- To read all the installation instructions completely before beginning.
- To read all the warning, attention and maintenance information.
- To purchase the proper supply lines.

Important

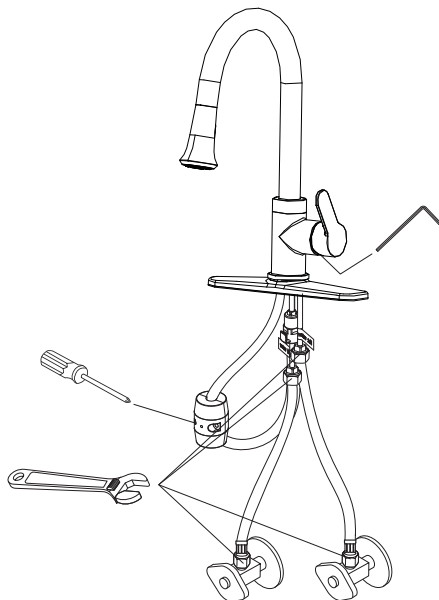


Tighten connection with two wrenches to prevent damage to tube body. Be careful not to bend the stem as this will void the product warranty.

Installation size map



Tools might be applied to the following places:

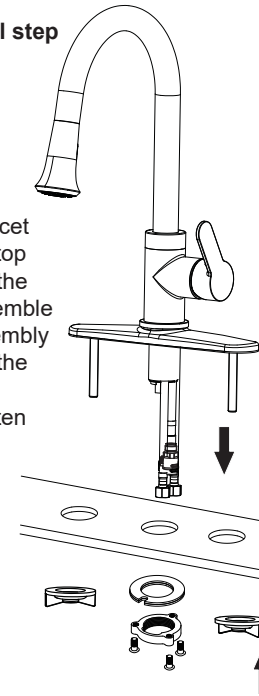


Faucet Installation

1

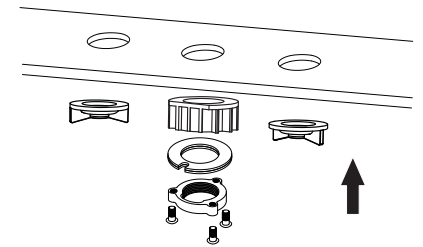
a General step

Position the faucet on the counter-top as shown. Add the O-ring and assemble the gasket assembly and lock nut to the threaded faucet sleeve and tighten the screws with screwdriver.



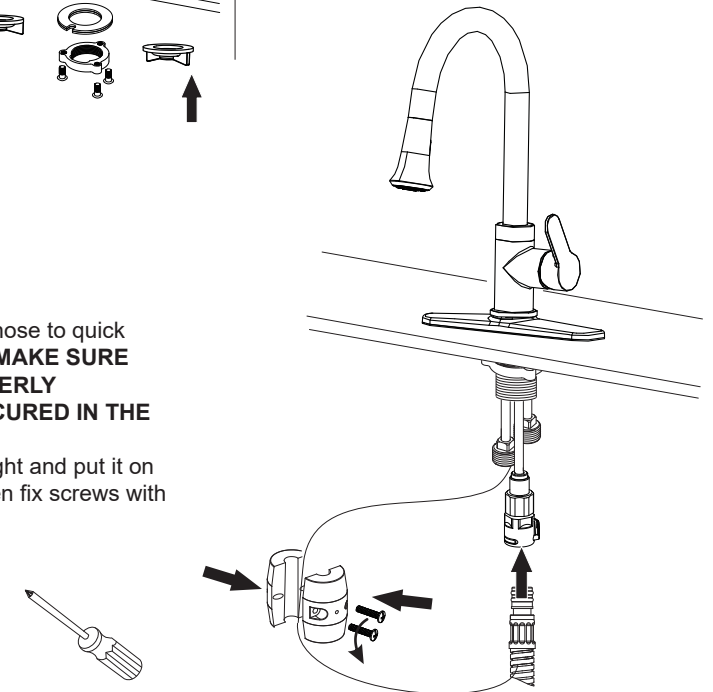
OR b Step for top mount stainless steel sinks or decks smaller than 1/2 inch

Secure the faucet body to the deck surface with the quick connect base. The quick connect base will provide a more stable and secure installation as it enlarges the contact area with sink.

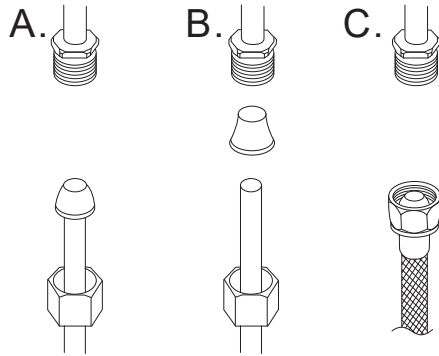


2

Connect the shower hose to quick connect. **CAUTION: MAKE SURE THE HOSE IS PROPERLY ENGAGED AND SECURED IN THE QUICK CONNECT.** Disassemble the weight and put it on the shower hose. Then fix screws with screwdriver.



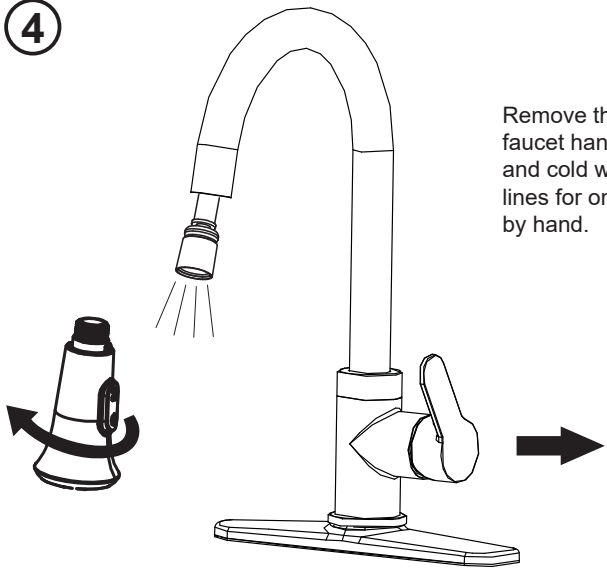
3



Connect to water supply lines with either:
 (A) 3/8" O.D. copper tubing (ball nose risers with the coupling nuts) or;
 (B) 3/8" copper tubing (no ball) with supplied tube head interior connector or;
 (C) IPS faucet connectors (1/2").

Checking and Testing

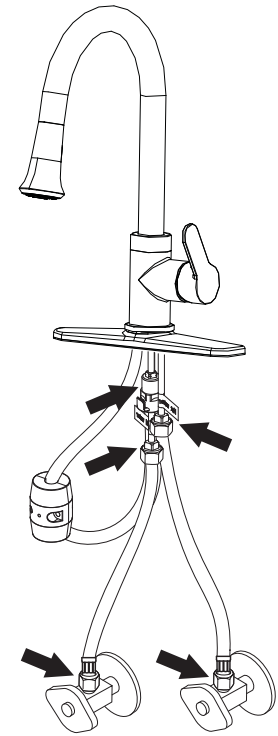
4



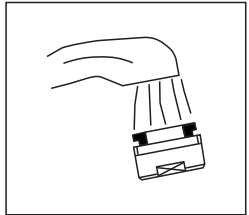
Remove the shower by hand. Turn the faucet handle all the way on, turn on hot and cold water supply and flush water lines for one minute. Reinstall shower by hand.

5

Check all connections at arrows for leaks and retighten if necessary. **BUT DON'T OVERTIGHTEN.**



Test Faucet Installation



- A. Move handle into "OFF" position.
- B. Turn on water supplies. Check connections for leaks.
- C. Remove hand shower and let both hot and cold water run for one minute. This will help clean any debris that might otherwise clog the system. Replace hand shower.
- D. Operate handle up and down, in cold and hot positions, to flush water lines thoroughly.

Maintenance: Simply rinse the surface with clear water or mild liquid detergents (if necessary). Dry the faucet with a clean soft cotton cloth. Do not use any cleaning agents containing acids polish abrasives or harsh cleaners.

Cleaning and care

Daily cleaning and care are required in order to keep the product shining and working properly.

1. Clean it with water and dry it with soft cloth.
2. Clean the product with gentle liquid or glass cleaner.
3. Don't use acid cleaner.
4. Don't clean with abrasive material, abrasive paper or knife.



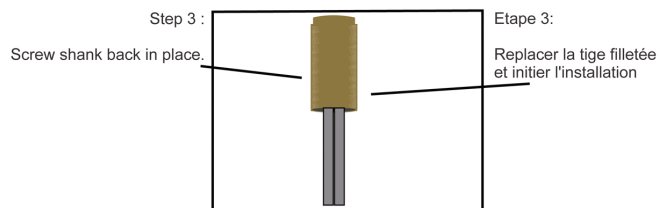
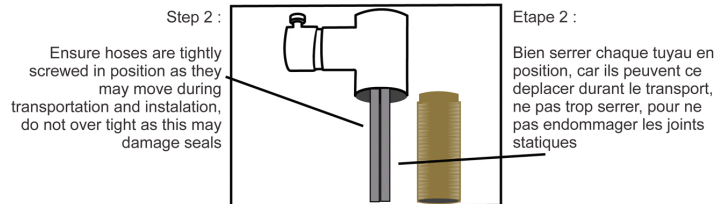
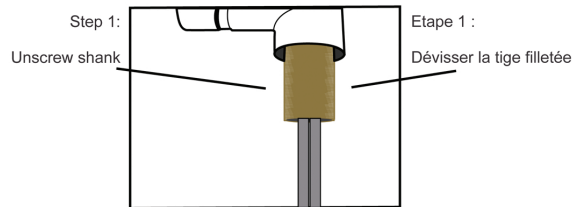
WARNING



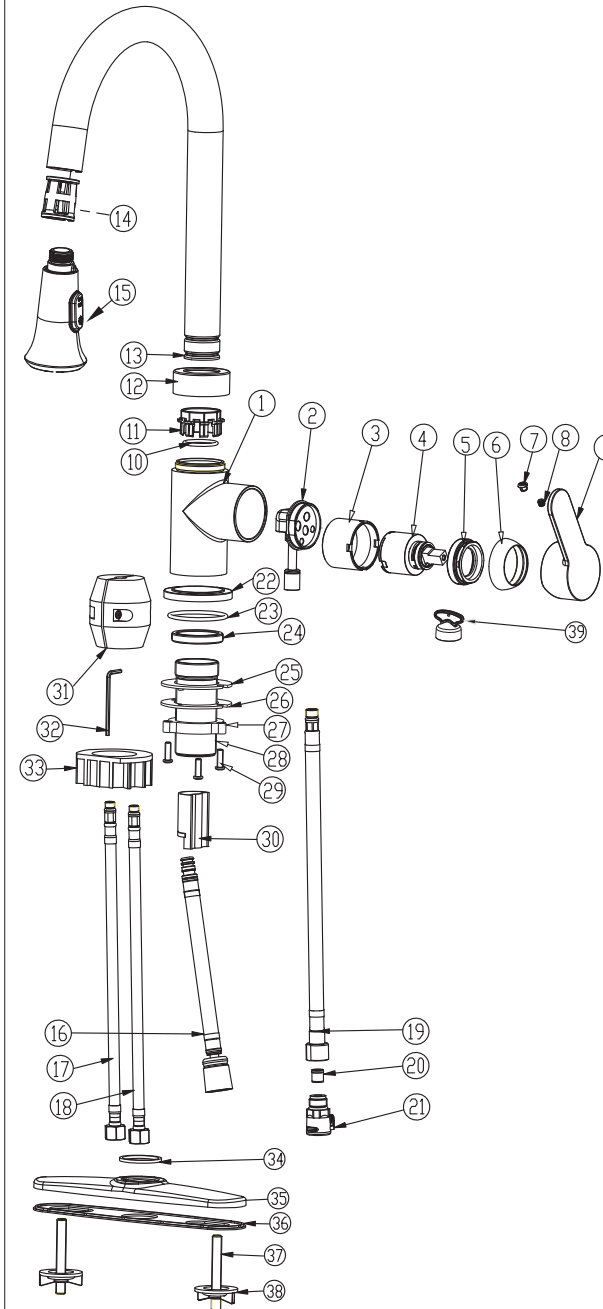
ATTENTION

Ensure hoses are tightly screwed in position as they may move during transportation and installation.

Assurez-vous de bien serrer les embouts de chaque Tuyau car ils peuvent se dévisser lors du transport – bien valider après l'installation aussi



Parts list



NO.	PART NAME
1	Body
2	Cartridge base
3	Cartridge sleeve
4	Cartridge
5	Fixing cartridge nut
6	Trim cap
7	Index
8	Screw
9	Handle
10	O-ring
11	Washer
12	Screw cap
13	Spout
14	Shower sleeve
15	Shower head
16	Pull-out flexible hose
17	Flexible hose (red)
18	Flexible hose (blue)
19	Outlet flexible hose
20	Non-returnable valve
21	Quick connect
22	Base
23	O-ring
24	Connector
25	Washer
26	Plate
27	Nut
28	Threaded pipe
29	Screw
30	Pull-out sleeve
31	Weight
32	Allen key
33	Quick connect base
34	Sponge plate
35	Deck plate
36	Gasket
37	Screw
38	Plastic nut
39	Aerator wrench